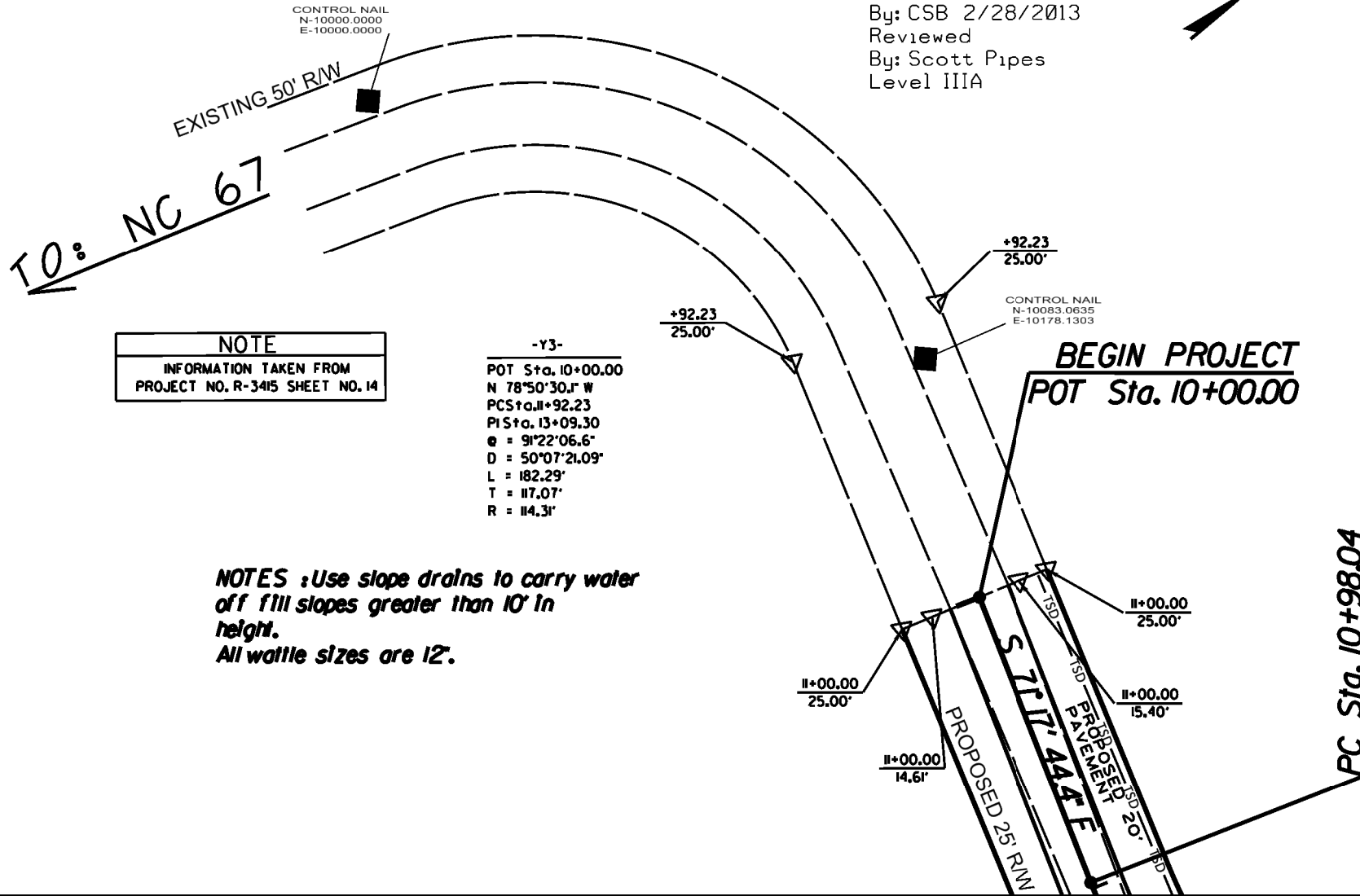
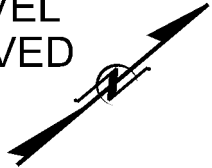


SR 1362 WATERWHEEL ROAD
 BOONVILLE TOWNSHIPS
 YADKIN COUNTY
 EXISTING 16' GRAVEL
 PROPOSED 20' PAVED

Erosion Control
 By: CSB 2/28/2013
 Reviewed
 By: Scott Pipes
 Level IIIA



NOTE
 INFORMATION TAKEN FROM
 PROJECT NO. R-3415 SHEET NO. 14

-Y3-
 POT Sta. 10+00.00
 N 78°50'30.1" W
 PCS Sta. 10+98.23
 PI Sta. 13+09.30
 e = 91°22'06.6"
 D = 50°07'21.09"
 L = 182.29'
 T = 117.07'
 R = 114.31'

NOTES : Use slope drains to carry water off fill slopes greater than 10' in height.
 All wattle sizes are 12".

PC Sta. 10+98.04
 MATCHLINE SEE SHEET 3'

SR 1362 WATERWHEEL ROAD
BOONVILLE TOWNSHIPS
YADKIN COUNTY
EXISTING 16' GRAVEL
PROPOSED 20' PAVED

Erosion Control
By: CSB 2/28/2013
Reviewed
By: Scott Pipes
Level IIIA

All wattle sizes are 12".
Station 13+95 to 16+64
are on a 60 day design

10 x 4 x 3
ID 3.5 & 3.6
2 Baffle Required

WILLIAMS CREEK
(3' WIDE)
"Classification C"

WOVEN WIRE / 1 STRAND BARR WIRE
1 STRAND ELECTRIC WIRE

CONTROL NAIL
N-10279.9007
E-10510.2349
14+76.54
12.43 RT

Station 13+55 to 16+62
are on a 60 day design

9 x 4 x 3
ID 3.2 & 3.3
1 Baffle Required

PC Sta. 14+05.16

BRIDGE NO. 158

PI Sta 11+42.49
Δ = 21° 30' 43.0" (LT)
D = 24° 29' 07.4"
L = 87.86'
T = 44.45'
R = 234.00'

9 x 4 x 3
ID 3.1 & 3.4
1 Baffle Required

CONTROL NAIL
N-10036.7985
E-10523.1809
12+55.55
53.46 RT

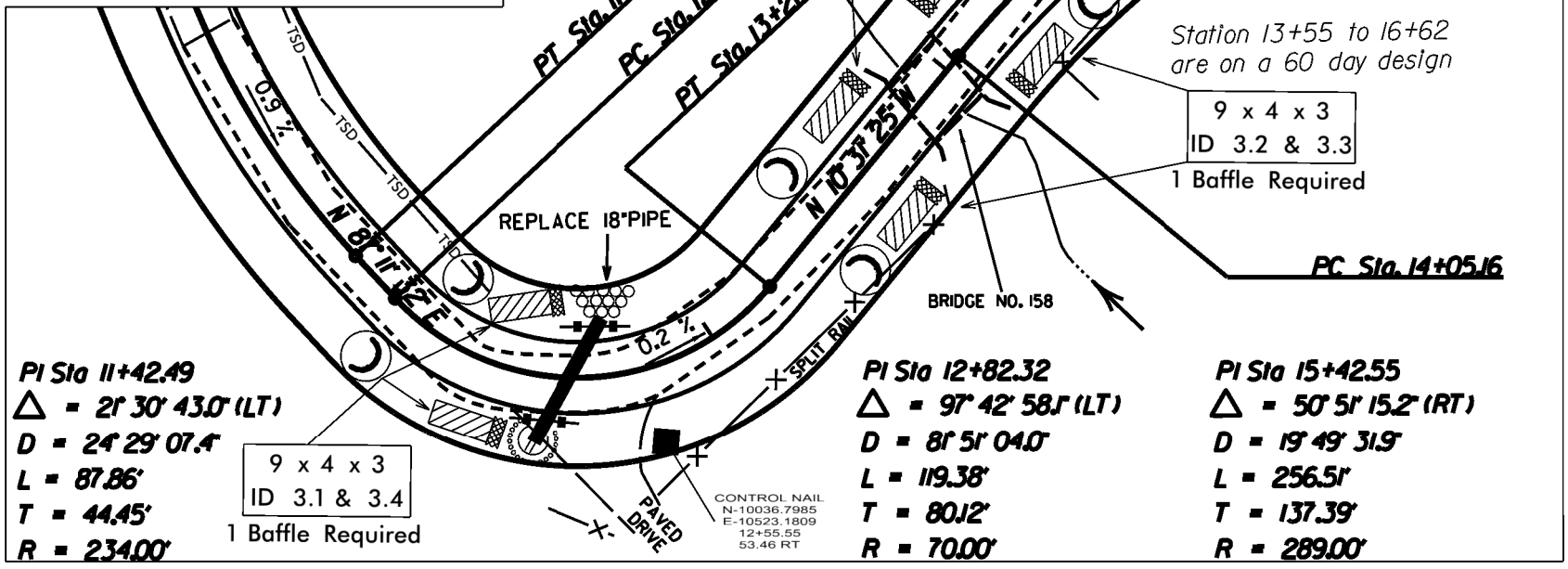
PI Sta 12+82.32
Δ = 97° 42' 58.1" (LT)
D = 81° 51' 04.0"
L = 119.38'
T = 80.12'
R = 70.00'

PI Sta 15+42.55
Δ = 50° 51' 15.2" (RT)
D = 19° 49' 31.9"
L = 256.51'
T = 137.39'
R = 289.00'

HORIZONTAL SCALE 1" = 50'

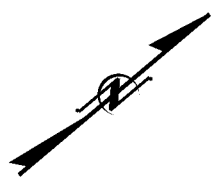
MATCHLINE SEE SHEET 2'

MATCHLINE SEE SHEET 4'



SR 1362 WATERWHEEL ROAD
BOONVILLE TOWNSHIPS
YADKIN COUNTY
EXISTING 16' GRAVEL
PROPOSED 20' PAVED

Erosion Control
By: CSB 2/28/2013
Reviewed
By: Scott Pipes
Level IIIA



PC Sta. 16+52.74

PI Sta 17+64.97
 $\Delta = 18^{\circ}13'02.0''$ (LT)
 D = 8'11"06.4"
 L = 222.57'
 T = 112.23'
 R = 700.00'

Station 13+95 to 16+64
are on a 60 day design

All wattle sizes are 12".
 Station 16+64 to 31+68
are on a 60 day design

12 x 6 x 3
 ID 4.3&4.4
 2 Baffle Required

NEW 24" PIPE

N 40' 19' 4" E

2 STRAND ELECTRIC WIRE

POWER POLE
 16+62
 33.88 RT

12 x 6 x 3
 ID 4.1&4.2
 2 Baffle Required

Station 16+62 to 31+60
are on a 60 day design

Station 13+55 to 16+62
are on a 60 day design

PI Sta 19+66.74
 $\Delta = 15^{\circ}07'26.4''$ (RT)
 D = 28'38"52.4"
 L = 52.79'
 T = 26.55'
 R = 200.00'

PT Sta. 18+75.31

PC Sta. 19+40.19

PT Sta. 19+92.98

MATCHLINE SEE SHEET 3'

PT Sta. 16+61.67

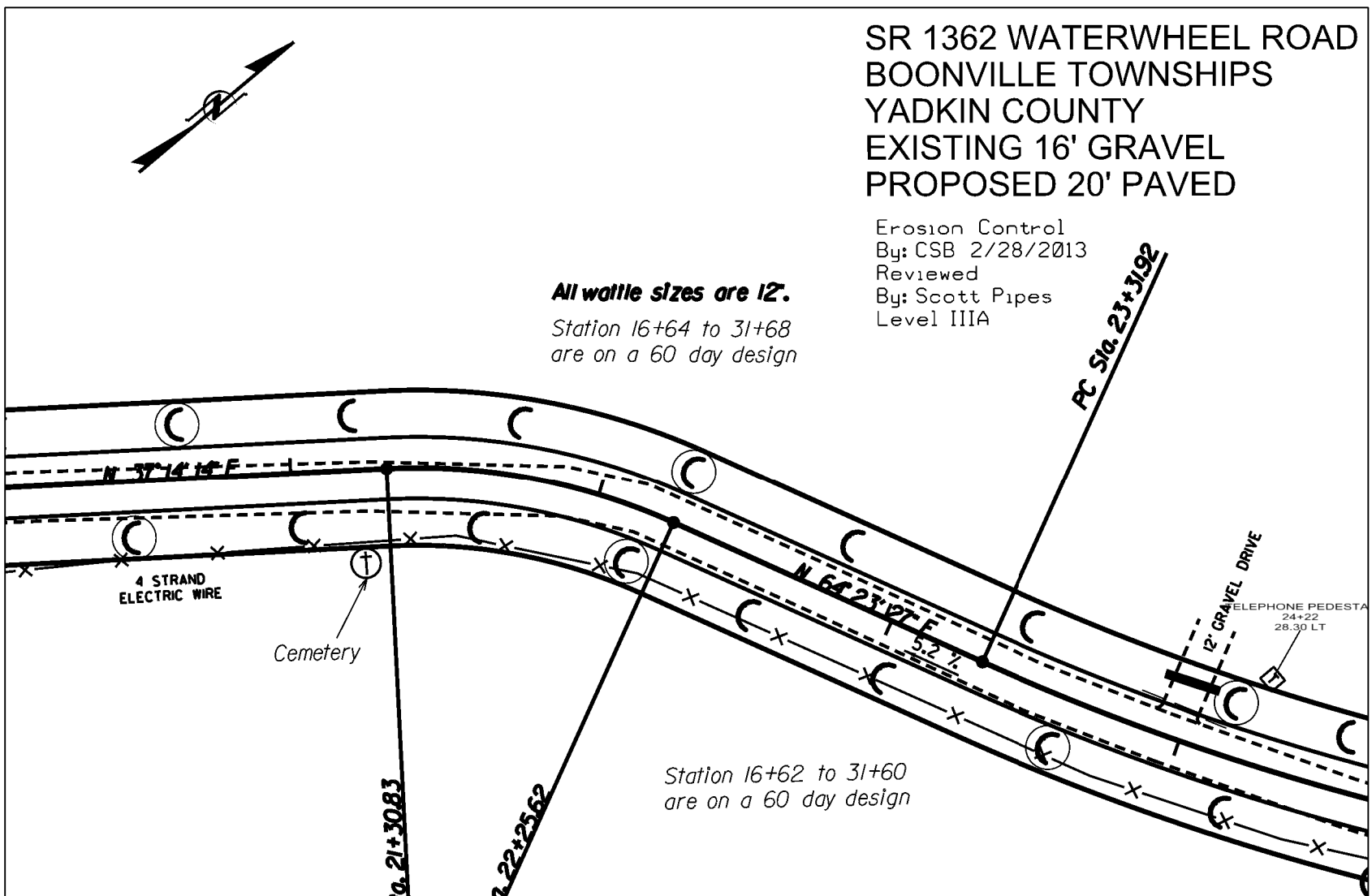
MATCHLINE SEE SHEET 5'

SR 1362 WATERWHEEL ROAD
 BOONVILLE TOWNSHIPS
 YADKIN COUNTY
 EXISTING 16' GRAVEL
 PROPOSED 20' PAVED

Erosion Control
 By: CSB 2/28/2013
 Reviewed
 By: Scott Pipes
 Level IIIA

All wattle sizes are 12".
 Station 16+64 to 31+68
 are on a 60 day design

Station 16+62 to 31+60
 are on a 60 day design



MATCHLINE SEE SHEET 4

MATCHLINE SEE SHEET 6

PI Sta 21+79.13
 $\Delta = 27^{\circ} 09' 13.4''$ (RT)
 $D = 28^{\circ} 38' 52.4''$
 $L = 94.78'$
 $T = 48.30'$
 $R = 200.00'$

HORIZONTAL SCALE 1" = 50'

SR 1362 WATERWHEEL ROAD BOONVILLE TOWNSHIPS YADKIN COUNTY EXISTING 16' GRAVEL PROPOSED 20' PAVED

Erosion Control
By: CSB 2/28/2013
Reviewed
By: Scott Pipes
Level IIIA

MATCHLINE SEE SHEET 5'

MATCHLINE SEE SHEET 7'

PT Sta. 26+74.20

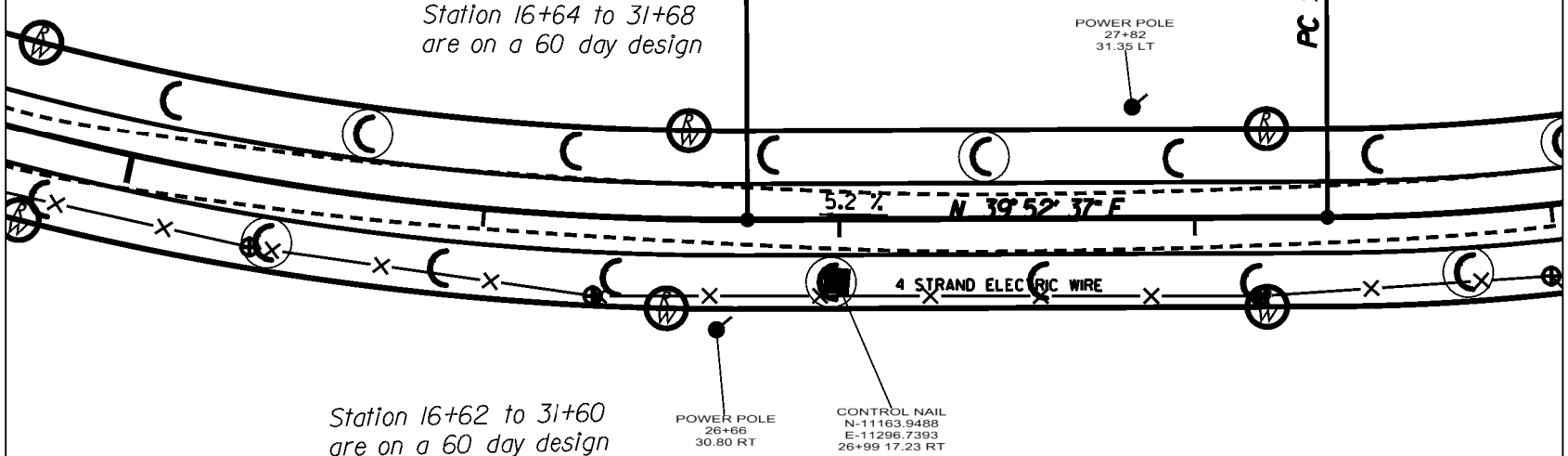
PC Sta. 28+37.22

All wattle sizes are 12".

Station 16+64 to 31+68
are on a 60 day design

Station 16+62 to 31+60
are on a 60 day design

PI Sta 25+05.72
 $\Delta = 24^{\circ} 30' 49.9" (LT)$
 $D = 7^{\circ} 09' 43.1"$
 $L = 342.28'$
 $T = 173.80'$
 $R = 800.00'$



POWER POLE
27+82
31.35 LT

POWER POLE
26+66
30.80 RT

CONTROL NAIL
N-11163.9488
E-11296.7393
26+99 17.23 RT

SR 1362 WATERWHEEL ROAD BOONVILLE TOWNSHIPS YADKIN COUNTY EXISTING 16' GRAVEL PROPOSED 20' PAVED



All wattle sizes are 12".

*Station 16+64 to 31+68
are on a 60 day design*

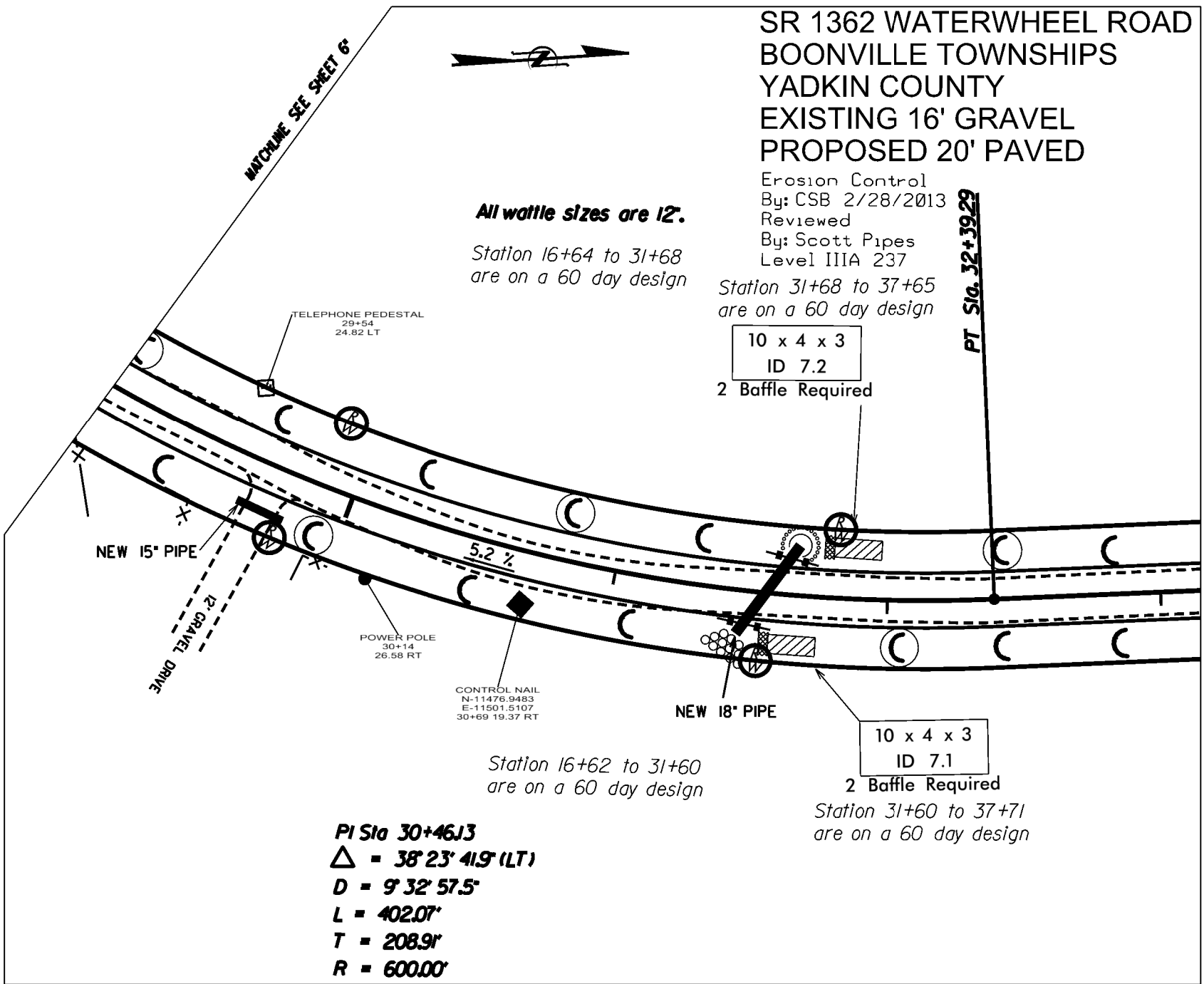
Erosion Control
By: CSB 2/28/2013
Reviewed
By: Scott Pipes
Level IIIA 237

*Station 31+68 to 37+65
are on a 60 day design*

10 x 4 x 3
ID 7.2
2 Baffle Required

PT Sta. 32+39.29

MATCHLINE SEE SHEET 6



NEW 15" PIPE

12" GRAVEL DRIVE

TELEPHONE PEDESTAL
29+54
24.82 LT

POWER POLE
30+14
26.58 RT

CONTROL NAIL
N-11476.9483
E-11501.5107
30+69 19.37 RT

5.2 %

NEW 18" PIPE

10 x 4 x 3
ID 7.1

2 Baffle Required

*Station 16+62 to 31+60
are on a 60 day design*

*Station 31+60 to 37+71
are on a 60 day design*

PI Sta 30+46J3
Δ = 38° 23' 41.9" (LT)
D = 9° 32' 57.5"
L = 402.07'
T = 208.9'
R = 600.00'

SR 1362 WATERWHEEL ROAD BOONVILLE TOWNSHIPS YADKIN COUNTY EXISTING 16' GRAVEL PROPOSED 20' PAVED

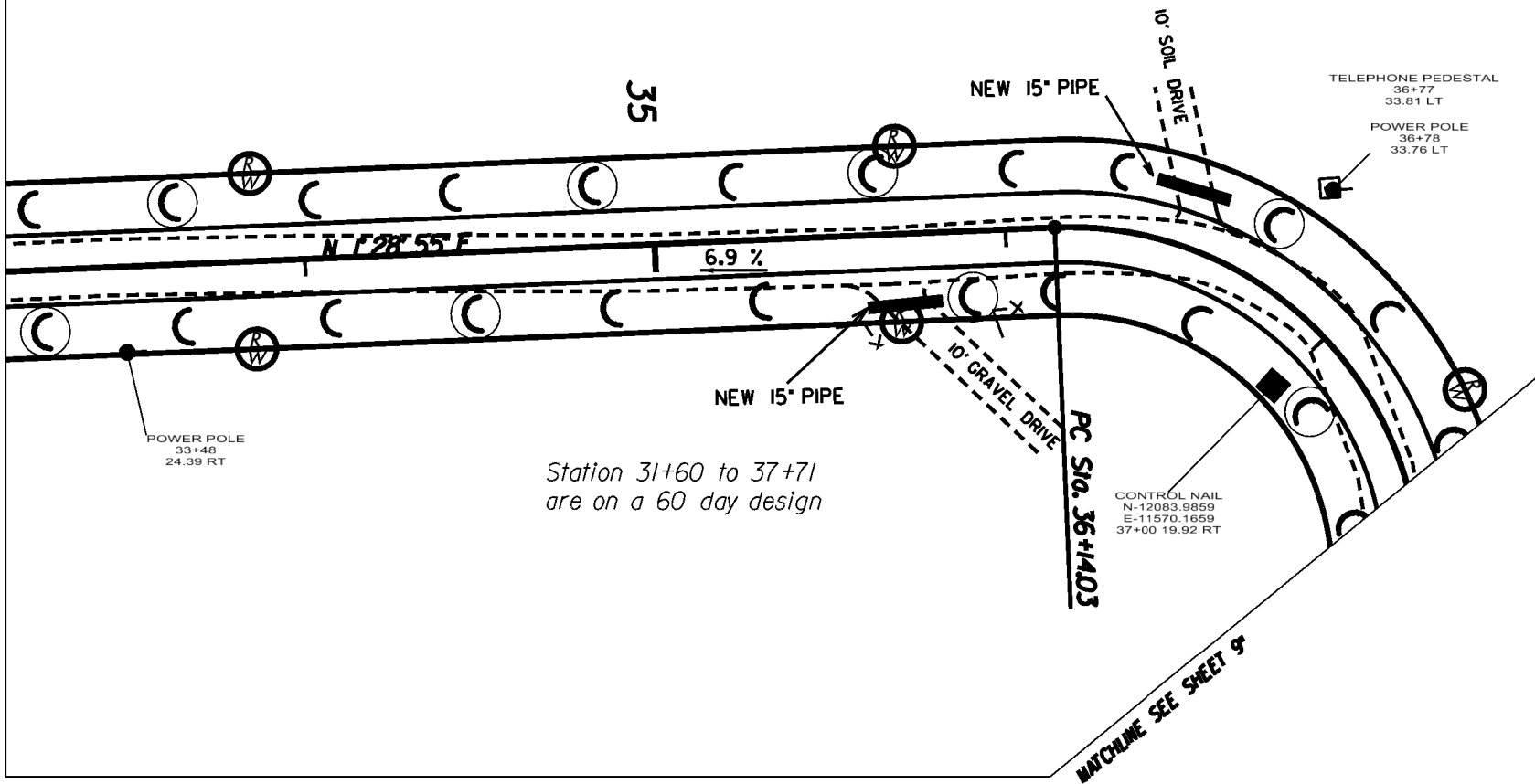
Erosion Control
By: CSB 2/28/2013
Reviewed
By: Scott Pipes
Level IIIA 237



MATCHLINE SEE SHEET 7'

PI Sta 37+02.20
 $\Delta = 82^\circ 48' 03.7''$ (RT)
 $D = 57^\circ 17' 44.8''$
 $L = 144.52'$
 $T = 88.16'$
 $R = 100.00'$

All wattle sizes are 12".
Station 31+68 to 37+65
are on a 60 day design



Station 31+60 to 37+71
are on a 60 day design

MATCHLINE SEE SHEET 9'

HORIZONTAL SCALE 1" = 50'

REVISED: 1/25/2013-Maintained Limits shown for
Thomas A. Bastable's refusal to sign new right of way agreement.

PROJECT REFERENCE NO.	SHEET NO.
11C.099014	09

SR 1362 WATERWHEEL ROAD
BOONVILLE TOWNSHIPS
YADKIN COUNTY
EXISTING 16' GRAVEL
PROPOSED 20' PAVED

Erosion Control
By: CSB 2/28/2013
Reviewed
By: Scott Pipes
Level IIIA 237

All wattle sizes are 12'.

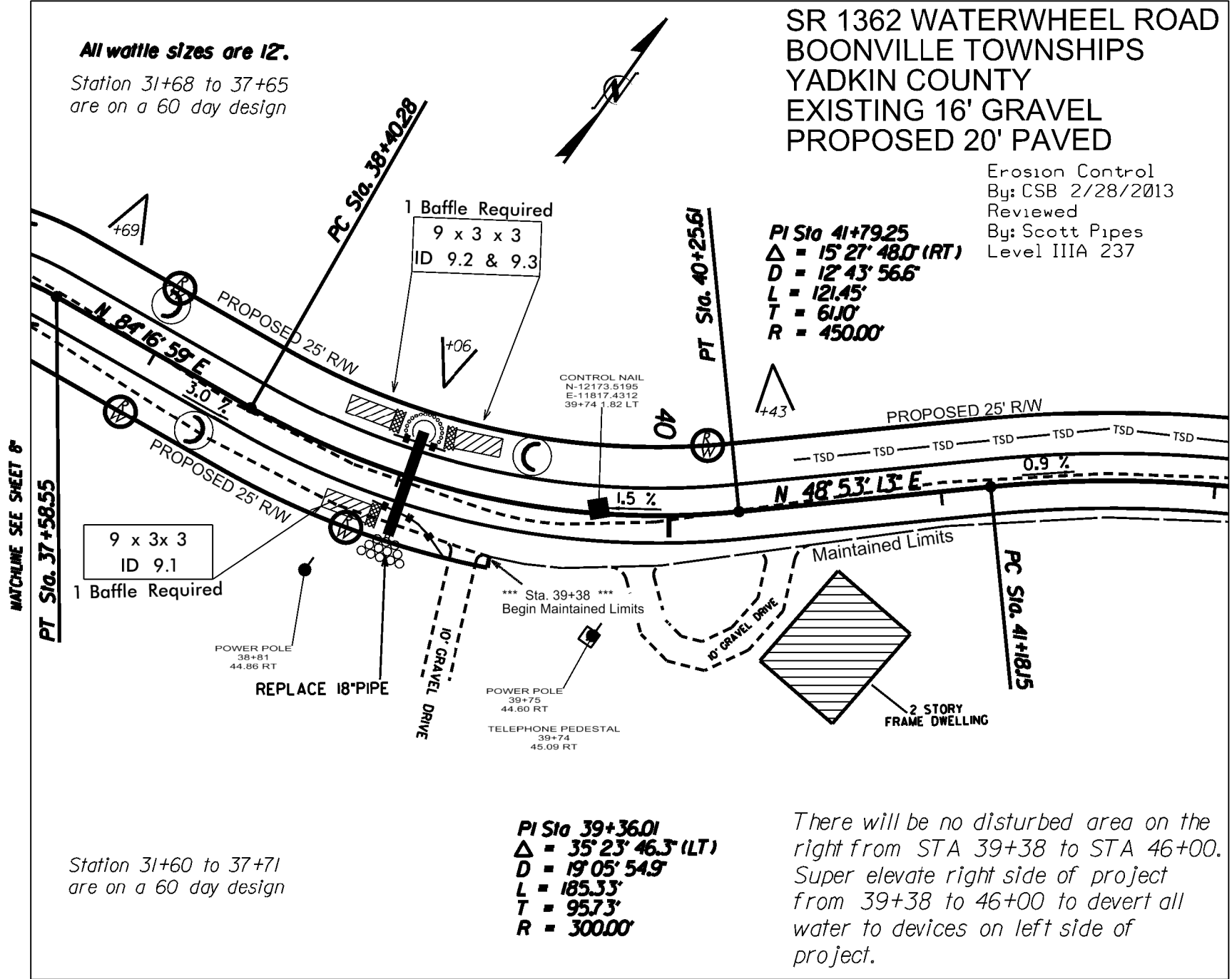
Station 31+68 to 37+65
are on a 60 day design

PI Sta 41+79.25
Δ = 15° 27' 48.0" (RT)
D = 12' 43" 56.6"
L = 121.45'
T = 61.10'
R = 450.00'

PI Sta 39+36.01
Δ = 35° 23' 46.3" (LT)
D = 19' 05" 54.9"
L = 185.33'
T = 95.73'
R = 300.00'

Station 31+60 to 37+71
are on a 60 day design

There will be no disturbed area on the
right from STA 39+38 to STA 46+00.
Super elevate right side of project
from 39+38 to 46+00 to divert all
water to devices on left side of
project.



MATCHLINE SEE SHEET 8'

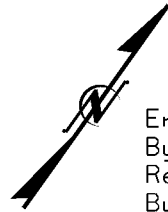
MATCHLINE SEE SHEET 10'

HORIZONTAL SCALE 1" = 50'

REVISED: 1/25/2013-Maintained Limits shown for
Thomas A. Bastable's refusal to sign new right of way agreement.

PROJECT REFERENCE NO.	SHEET NO.
11C.099014	10

SR 1362 WATERWHEEL ROAD
BOONVILLE TOWNSHIPS
YADKIN COUNTY
EXISTING 16' GRAVEL
PROPOSED 20' PAVED



Erosion Control
By: CSB 2/28/2013
Reviewed
By: Scott Pipes
Level IIIA 237

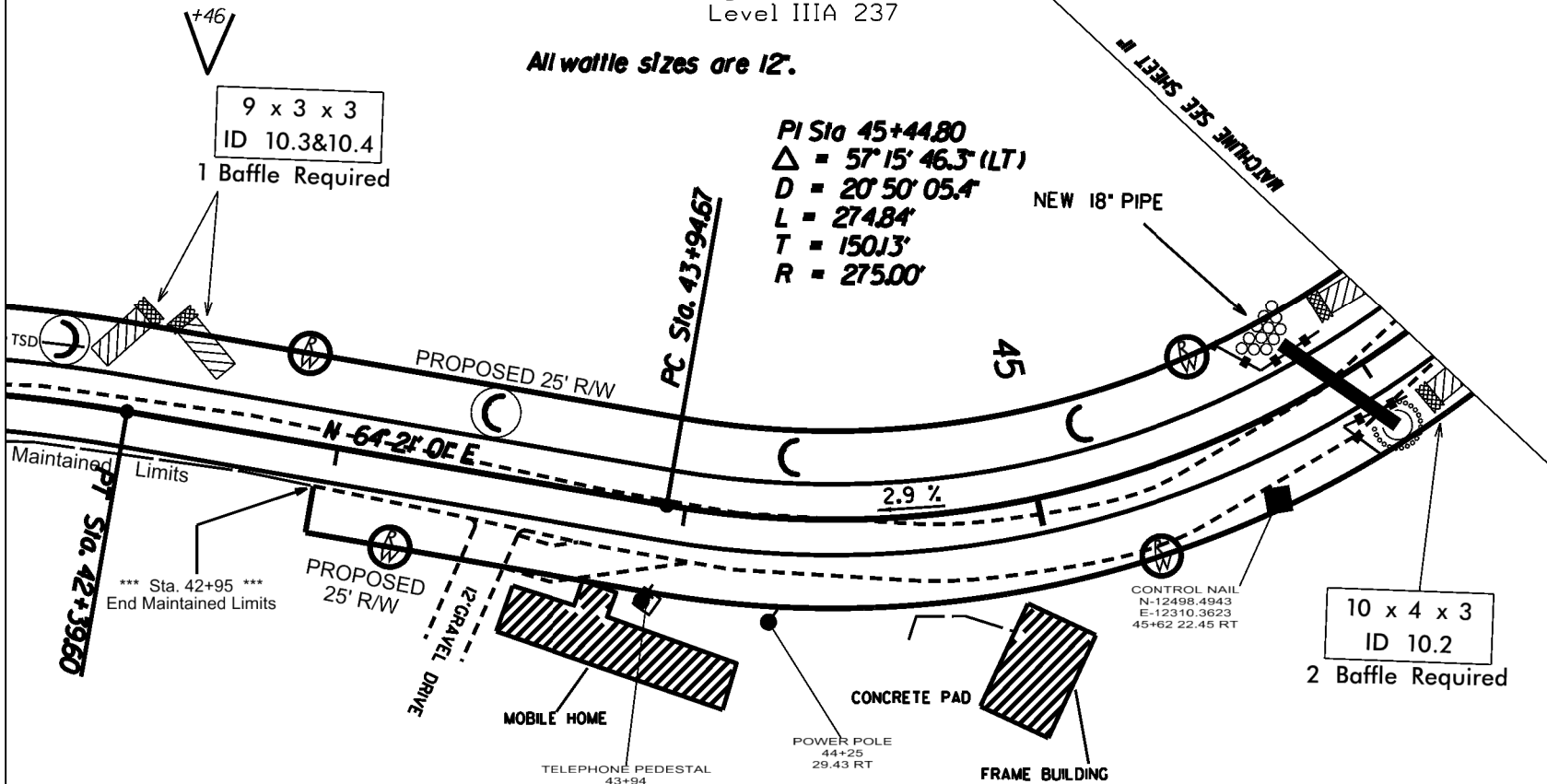
All waffle sizes are 12".

PI Sta 45+44.80
 $\Delta = 57^{\circ}15'46.3"$ (LT)
 $D = 20'50'05.4"$
 $L = 274.84'$
 $T = 150.13'$
 $R = 275.00'$

NEW 18" PIPE

MATCHLINE SEE SHEET 9

MATCHLINE SEE SHEET 11



There will be no disturbed area on the right from STA 39+38 to STA 46+00. Super elevate right side of project from 39+38 to 46+00 to divert all water to devices on left side of project.

HORIZONTAL SCALE 1" = 50'

Erosion Control
 By: CSB 2/28/2013
 Reviewed
 By: Scott Pipes
 Level IIIA 237

SR 1362 WATERWHEEL ROAD
 BOONVILLE TOWNSHIPS
 YADKIN COUNTY
 EXISTING 16' GRAVEL
 PROPOSED 20' PAVED



MATCHLINE SEE SHEET 10'

PT Sta. 46+69.51

All waffle sizes are 12".

END PROJECT
POT Sta. 49+79.98

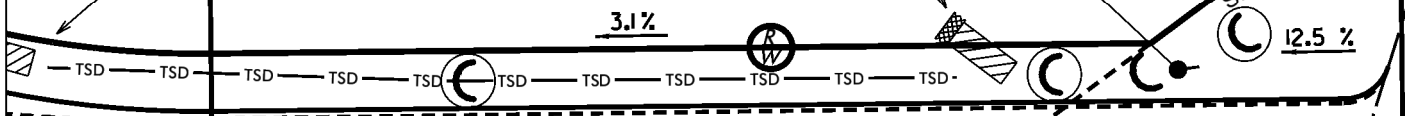
9 x 3 x 3
 ID 11.1
 1 Baffle Required

12 x 4 x 3
 ID 11.2
 2 Baffle Required

POWER POLE
 49+21
 18.05 LT

PROPOSED
 100' X 100'
 SIGHT TRIANGLE

WOODRUFF RD.
 SR 1363



N 7°05'14" E

5.2 %

POWER POLE
 49+43
 19.82 RT
 TELEPHONE PEDESTAL
 49+43
 20.35 RT

PROPOSED
 100' X 100'
 SIGHT TRIANGLE

EXISTING 18' MAINT. LIMITS